



## FAMILY RESOURCE GUIDE

---

Dear COTW Co-Op Families,

This is our updated Family Resource Guide! We hope that this resource guide will be helpful to you in finding places to play, learn, eat, shop, and various other family activities within our community. The Family Resource Guide also includes some of our COTW families "favorite things to do" as well as an extensive list of websites and blogs related to parenting.

The entries are updated periodically for any information changes. COTW Co-Op does not endorse any or all of the programs and services listed here. We only want to provide some general information in categories that may interest families with young children. It is also an opportunity to support our COTW Co-Op families that may be new or unfamiliar with our community.

We welcome additional entries and user comments. Let us know your opinions on anything that you have tried yourself. You can email COTW Co-Op with your thoughts and ideas.

Happy reading!

## TABLE OF CONTENTS

---

PLAY	3
<i>Playgrounds</i>	
<i>Parks</i>	
<i>Nature Trails</i>	
<i>Hiking</i>	
<i>Biking</i>	
<i>Swim</i>	
LEARN	8
<i>Libraries</i>	
<i>Museums</i>	
<i>Music classes</i>	
<i>Gymnastics/Dance</i>	
<i>Preschools</i>	
EAT	17
<i>Family-friendly restaurants &amp; Cafés</i>	
<i>Groceries/Farmers' Markets</i>	
<i>Pick-your-own farms</i>	
SHOP	24
<i>Clothing</i>	
<i>Children's Shoes</i>	
<i>Bookstores</i>	
<i>Toy shops</i>	
FAMILY ENTERTAINMENT	30
<i>Museums</i>	
<i>Children's Theater</i>	
<i>Orchestras</i>	
<i>Other performances, venues, cirques</i>	
MISCELLANEOUS	36
<i>Birthday Party Locations</i>	
<i>Doctors/Urgent Care</i>	
<i>Childcare/Babysitters</i>	
<i>Family Camping/Hiking</i>	
<i>Daytrips</i>	
WEBSITES, PUBLICATIONS, BLOGS & OTHER RESOURCES	44
CO-OP MEMBER FAVORITES (SURVEY)	48
CALENDAR OF EVENTS	52

# PLAY

---

## OUTDOOR PLAYGROUNDS

### Druid Hill Playground

2600 Madison Avenue, Baltimore, MD 21217

A large and well-maintained playground is located on the reservoir side of Druid Hill Park overlooking the beautiful lake and fountain. To access the playground, enter Druid Hill Park and follow the signs for the Baltimore Safety City. The playground is on the hill directly above the Safety City (a miniature model of Baltimore used to teach traffic safety to Baltimore City students). Benches and picnic tables as well as pavilions and grills are available nearby.

### Federal Hill Park

300 Warren Avenue, Baltimore, MD 21230

From the top of Federal Hill, you can see Baltimore's gorgeous cityscape. A fenced play area with swings, slides and a large sandbox is sized appropriately for toddlers. Dogs have their own separate fenced area nearby.

### Meadowood Regional Park

10650 Falls Road, Baltimore, MD 21093

One of the large regional parks in the Baltimore County park system, Meadowood has separate playgrounds for toddlers and older children. A large central playing field is bordered by a paved track perfect for walking or biking. Pavilions near the playgrounds offer shade as well as picnic tables.

### Mt. Vernon Children's Park

801 N. Calvert Street, Baltimore, MD 21202

<http://www.mountvernonchildrenspark.org/>

<https://www.facebook.com/MountVernonChildrensPark>

With a child-activated water spray park, innovative and creative equipment, a huge sandbox, traditional hedge maze and spectacular pavilion by renowned local artist David Hess, there is no playground anywhere else like the Mount Vernon Children's Park.



### **Patterson Park**

27 South Patterson Park Avenue, Baltimore, MD 21231

<http://pattersonpark.com/>

Patterson Park has two very accessible playgrounds that provide hours of fun for children of all ages (and parents too!). The nearby park area also offers picnic areas and a lake for toy boats. In the summer, activities such as music and storytelling take place in the playground areas.

### **Recycled Tire Park in Patapsco State Park (Hilton Area)**

1101 Hilton Avenue, Catonsville, MD 21228

<http://www.dnr.state.md.us/publiclands/central/patapscohilton.asp>

A truly unique playground constructed entirely from recycled truck tires. Features tire swings, tire sculptures, a tire obstacle course and a huge slide that ends in a soft landing thanks to shredded tire pieces. The playground is large and best for children 2 and up, but younger children might enjoy climbing on some of the lower tire structures. There is a fee to enter the park depending on the season.

### **Rodgers Forge Tot Lot**

Located on the western end of Hopkins Road, between Bellona Avenue and Blenheim Road in Towson, MD.

<http://www.rodgersforge.org/kids.shtml>

One of Rodgers Forge's biggest assets is the community Tot Lot. This is well used and a wonderful place to meet other families and kids, especially if you are new to the area. The Tot Lot has two sets of swings, three slides, a large climbing structure and a sand pit. A see-saw and a large collection of donated children's outdoor toys complete the facility.

### **Stadium Playground**

900 E. 33<sup>rd</sup> Street, Baltimore, MD 21218

443-756-6198 | <http://stadiumplayground.org/>

Neighborhood children helped to design this playground and volunteers from the area supervised the construction. The massive wooden playground is located behind the YMCA on 33<sup>rd</sup> Street and Ellerslie and features swings, castles, bridges, towers, a volcano, and a crab! There is a designated "tot" area and a more challenging obstacle course for the older children. The playground is 70 percent handicapped accessible. There are benches and a gazebo nearby.

### **Stoney Run Park (aka Linkwood Playground)**

Corner of Linkwood Road and Coldspring Lane in the Roland Park (Baltimore City) neighborhood.

A well-equipped, high-quality playground, with shade and benches. No bathrooms. Park on Overhill (cross-street Linkwood) and follow the bicycle path to get there. Close to the Children of the World Co-op.

## INDOOR PLAYGROUNDS

### **Kiddie Crusoe**

7 Fox Tail Road, Timonium, MD 21093

(410) 853-7910 | [www.kiddiecrusoe.com](http://www.kiddiecrusoe.com) | Admission fee required | Memberships available

Kiddie Crusoe is a large indoor play space that includes several themed rooms, an indoor playground with several slides, an inflatable play area, a café, a toy store and Wii playrooms. Located just off York Road in Timonium.

### **The Ultimate Playzone**

10626 York Road, Cockeysville, MD 21030

410-628-7529 | <http://www.ultimateplayzone.com/> | Admission fee required | Regular sessions, pop-in, family nights, and birthday parties rentals available.

Large inflatable jumping structures, a large wooden pirate ship, and a castle with slides. Socks required.

## PARKS, HIKING AND BIKING

### **Baltimore Conservatory and Botanic Gardens**

3100 Swann Drive (in Druid Hill Park), Baltimore, MD 21217

410-396-0008 | <http://www.baltimoreconservatory.org/>

Located just inside Druid Park near the intersection of Gwynns Falls Parkway and McCulloh Street, the conservatory has grown from the original 1888 Victorian Palm House to include three display greenhouses and 1.5 acres of gardens.

### **Cylburn Arboretum**

4915 Greenspring Avenue, Baltimore, MD 21209

410-367-2217 | <http://www.cylburnassociation.org>

Cylburn Arboretum is a nature preserve encompassing 207 acres of woodlands featuring a large selection of gardens and trees, nature trails, greenhouses, and a historical mansion. Special children's events such as guided nature walks are scheduled throughout the summer.

### **Fort McHenry National Monument**

2400 East Fort Avenue, Baltimore, MD 21230

410-962-4290 | <http://www.nps.gov/fomc/> | Admission fee required for adults | Children under 15 are free | Free parking | Closes at 5 p.m.

The fort has served as a Coast Guard training facility, hospital, and prison camp for Confederate prisoners during the Civil War. It was the fort's ability to withstand bombardment during the American Revolution that inspired Francis Scott Key to write the words to the "Star Spangled Banner." The wide-open spaces and water views are interesting for all family members. Great place for a picnic.

### **Gwynns Falls Trail**

1920 Eagle Drive, Baltimore, MD 21207

410-396-0440 | <http://www.gwynnsfallstrail.org>

The Gwynns Falls Trail is a hiking and biking trail that begins in Gwynns Fall/Leakin Park and generally follows the stream to Middle Branch and Inner Harbor. Within Gwynns Falls/Leakin Park and its 1,200 acres, there are also approximately 10 miles of existing natural paths wandering up and down the slopes of this wilderness park.

### **Lillian Holt Park and Center for the Arts**

34 Elmont Avenue, Baltimore, MD 21236

410-887-5307

The Lillian Holt Park and Center for the Arts is located in the northeast region of Baltimore County in the Overlea-Fullerton community. The center offers a variety of art, music, and poetry classes, including holiday festivals and exhibits of contemporary visual arts. At Holt Park, there are 13 acres of wooded trails, an arboretum, gardens, greenhouse, outdoor amphitheater with gazebo, lily pond, and a labyrinth with a meditation garden.



### **NCR Trail**

[http://www.dnr.state.md.us/greenways/ncrt\\_trail.html](http://www.dnr.state.md.us/greenways/ncrt_trail.html)

Maryland's Northern Central Railroad Trail (NCRT) extends 20 miles, stretching from Ashland Road in the Hunt Valley area to the state line. The trail is 10 feet wide with a stone dust surface. The most popular activities on the trail are hiking, jogging, bicycling, and horseback riding. The trail also provides access for fishing. Trail users should note that the southern end of the trail receives heavy use on weekends. Parking areas from Monkton south are often filled. The trail is less congested and parking is more available at the northern end during peak times.

The southernmost trailhead is in Cockeysville at Paper Mill Road. Take York Road (Route 45) to Cockeysville (Exit 18 off I-83). Turn right (east) on Ashland Road. Bear left onto Paper Mill Road. Go less than ½ mile. Look for safe parking areas along the road shoulder near the trail.

### **Oregon Ridge Park and Nature Center**

13555 Beaver Dam Road, Baltimore, MD 21030

410-887-1815 | <http://oregonridgenaturecenter.org/>

At over 1,000 acres, Oregon Ridge Park is the largest park site in Baltimore County. This park offers a wide range of recreational opportunities. There is a playground, swimming lake and beach house, and nature center as well as hiking trails. The Nature Center provides activities such as moonlight hikes, bird watching, bee-keeping demonstrations, and maple syrup-making. *Fees may be applicable for swimming and some special programs.*

### **Robert E. Lee Park**

Falls Road at Lakeside Drive, Baltimore, MD 21210

410-887-4156

Just off of Falls Road in Mt. Washington, this large piece of wilderness (over 450 acres) offers miles of trails for hiking and jogging. One of the main trails circumscribes Lake Roland, which was once one of the city's main reservoirs. Other trails reach back into densely forested areas, some taking you over scenic footbridges and others through small tunnels. A popular destination for people trying to escape urban life, dog-walkers, and of course, ducks.

### **Sherwood Gardens**

4100 Greenway, Baltimore, MD 21218

410-785-0444 | <http://www.guilfordassociation.org/sherwood/>

Sherwood Gardens is located one block east of the 4100 block of St. Paul Street. Turn east onto East Highfield Road to reach the gardens. Six blocks away from the Co-op and over six acres, this Guilford public garden is known for its tulip beds in the spring. There are no fences or playground equipment, but it is a beautiful space for picnics and playing ball.

## LEARN

---

### LIBRARIES

#### **Baltimore County Public Library**

<http://www.bcpl.info/>

The Baltimore County public library system has 14 branches and regularly scheduled events for children and families in all locations. The Towson Library, located at 320 York Road, has a large children's area decorated like a castle and a small enclosed area where toddlers can play. One must call ahead to reserve a place for children's storytime. Contact each branch for free programs.

#### **Enoch Pratt Free Library (Baltimore City)**

<http://www.prattlibrary.org/>

The Baltimore City public library system has numerous locations. The Central Library, located at 400 Cathedral Street, has a large children's area complete with a goldfish pond and puppet stage. Activities and special events for children are scheduled regularly at all library locations, including Spanish-friendly programs. "Mother Goose on the Loose" programs for children up to 2 years old and their caregivers, and "Preschool Leaps" for children 3-5 years old are offered on a regular basis in many branches. The closest location to COTW are Hampden, Roland Park and Waverly branches. "Mother Goose Baby Steps" meets Mondays at 1:30 p.m. at Roland Park, Wednesdays at 10:30 a.m. at Hampden, and Thursdays 10:30 a.m. at Waverly.

### MUSEUMS

#### **The American Visionary Art Museum**

800 Key Highway, Baltimore, MD 21220

410-244-1900 | <http://www.avam.org/> | Hours: Tues–Sun, 10 a.m.-6 p.m.; Closed Mon. |

Admission fee required for adults and children over age 6

Visionary art is produced by self-taught individuals, usually without formal training. This museum offers plenty of visual stimulation for visitors of all ages. Children will particularly enjoy the giant whirligig and sculpture plaza, a 55 foot tall brilliant, multicolored, wind-powered sculpture. This area is free to visit anytime. The Wildflower Garden contains wildflowers, aromatics, and climbing vines that encircle the museum's wooden meditation chapel and wedding altar built by visionary artist Ben Wilson.





### **B&O Railroad Museum**

901 W. Pratt Street, Baltimore, MD 21223

410-752-2490 | [www.borail.org](http://www.borail.org) | Hours: Mon–Sat, 10 a.m.-4 p.m.; Sun, 11 a.m.-4 p.m. |

Admission fee required for adults and children over age 2 | Family memberships start at \$100

Home of the oldest and most comprehensive collection of railroad history in the Western Hemisphere. The collection of locomotives and rolling stock is on display inside a completely restored roundhouse. Train rides are included in the price of admission and offered daily in the summer and only on weekends in the winter,.

### **Baltimore Museum of Art (BMA)**

10 Art Museum Drive, Baltimore, MD 21218

410-396-7100 | [www.artbma.org](http://www.artbma.org) | Hours: Wed–Fri, 10 a.m.-5 p.m.; Sat/Sun, 11 a.m.-6 p.m.;

Closed Mon/Tues | Free Admission

To appeal to families with young children, the BMA offers special BMA packs that are self-guided kits that invite kids to dress up, sketch, or sing their way through the galleries. The packs are available free of charge Thursdays, Saturdays, and Sundays from 11 a.m.-3 p.m. There are family-friendly activities including music, performances, guided tours, audio tours, and hands-on workshops. Free Sunday family activities start at 2 p.m., which include various arts and crafts projects.

### **Baltimore Museum of Industry**

1415 Key Highway, Baltimore, MD 21230

410-727-4808 | [www.thebmi.org](http://www.thebmi.org) | Hours: Tues–Sun 10 a.m.-4 p.m. | Admission fee required for adults and children over age 7

From food canning to broadcasting, visitors can interact with the technologies that forged the Industrial Revolution and brought us to the 21st century. Step into vividly-recreated workshops, a bank building, and pharmacy. See a replica of an early dock and dockmaster's shed and walk through the original 1865 Platt Oyster Cannery structure, the only surviving cannery building in Baltimore.

### **Baltimore Streetcar Museum**

1901 Falls Road, Baltimore, MD 21211

410-547-0264 | <http://www.baltimorestreetcar.org/> | Open Sundays (all year), Noon-5 p.m.

Open Saturdays, June–October, Noon-5 p.m. | Admission fee required for adults and children over age 4 | Family maximum price \$24

Take unlimited rides on original Baltimore streetcars while listening to information from knowledgeable operators. The museum also offers streetcar displays and a guided car house tour.

### **Carrie Murray Nature Center**

1901 Ridgetop Road, Baltimore, MD 21207

410-396-0808 | [www.carriemurraynaturecenter.org](http://www.carriemurraynaturecenter.org) | Hours: Mon–Fri, 8:30 a.m.-4:30 p.m.;  
Sat, 10 a.m.- 3 p.m.; Closed Sun

An educational center in Leakin Park where children can learn about native Maryland animals and insects. Features an insect zoo, live reptiles and amphibians, birds and a friendly porcupine. There are also some short nature walks.

### **Hampton National Historic Park**

535 Hampton Lane, Towson, MD 21286

410-823-1309 | [www.nps.gov/hamp/](http://www.nps.gov/hamp/) | Grounds open daily, Buildings closed to public Mon–  
Thurs | Free admission

Historic mansion, farmhouse, dairy, and former tenant houses. Hourly tours of the Mansion are given Friday-Sunday only. Family activities held at the dairy and farmhouse.

### **Irvine Natural Science Center**

8400 Greenspring Avenue, Stevenson, MD 21153

410-484-2413 | <http://www.explorenature.org/> | Hours: Mon–Sun, 9 a.m.-5 p.m.

Exhibits showing natural artifacts such as bones, shells, furs, tree slices, antlers, fossils, and much more. Live animals including tree frogs and other reptiles, amphibians, and invertebrates. Nature trails for families. Special educational programs for toddlers and older children. Parent/child classes for ages 2-3 meet 10 a.m.-11:30 a.m. in the Fall.

### **Maryland Fire Museum**

1301 York Road, Lutherville, MD 21093

410-321-7500 | <http://www.firemuseummd.org/> | Closed January–April | Open May on  
Saturdays, 10 a.m.-4 p.m. | Open June-August from Wed–Sat, 10 a.m.-4 p.m. | Open  
September–December on Saturdays, 10 a.m.-4 p.m. | Admission fee required for adults and  
children over age 5

Over fifty fire trucks are on display and are complemented by a broad range of special exhibits such as a working fire alarm telegraph system, badge and uniform displays, and Baltimore’s High Pressure Pumping System.

### **Maryland Science Center**

601 Light Street, Baltimore, MD 21230

410-685-5225 | <http://www.mdsci.org/> | Hours are Sunday-Thursday, 10 a.m.-6 p.m.; Friday and Saturday, 10 a.m.-8 p.m. *Times change seasonally.* | Admission fee required for adults and children over age 3 | Extra charge for IMAX films | Memberships begin at \$75

Several permanent exhibits tempt children to explore kinetic energy, the inner workings of the human body and the lives of dinosaurs. A special room designed for children ages 0-8 provides a variety of hands-on activities for younger scientists. The Maryland Science Center also houses a planetarium and IMAX movie theater.

### **Maryland Zoo in Baltimore**

Druid Hill Park, Baltimore, MD 21217

410-396-7102 | [www.marylandzoo.org/](http://www.marylandzoo.org/) | March–December open daily from 10 a.m.-4 p.m. | Admission: Admission fee required for adults and children over age 2 | Special pricing available January–February | Family Memberships begin at \$99

Visit elephants, rhinos, zebras, leopards, cheetahs, lions, giraffes, penguins, gazelles, warthogs, primates and other animals in naturalistic African habitats. Witness the majesty of polar bears in the underwater viewing area alongside Arctic foxes, owls and other Arctic wonders of the Far North. The Children's Zoo has a giant barn silo slide and friendly animals to groom and pet.

### **The National Aquarium in Baltimore**

501 East Pratt Street, Baltimore, MD 21202

410-576-3800 | <http://www.aqua.org/> | Hours change seasonally | Admission fee required for adults and children over age 3 | Additional cost for Dolphin Show and IMAX Theatre | Family Memberships start at \$175.

Themed galleries display aquatic life from around the world. Displays include Maryland's freshwater ecosystems, tidal marshes and coastal beaches. The Amazonian river exhibit brings visitors close to dazzling tropical fish as well as giant river turtles, dwarf caimans, and pygmy marmosets. The rooftop rain forest exhibit contains colorful birds, monkeys and dense tropical foliage. The shark and stingray collections are sure to be a hit with children along with the dolphins in the Marine Mammal Pavilion.

### **The National Great Blacks In Wax Museum**

1601-03 East North Avenue, Baltimore, MD 21213

410-563-3404 | <http://www.greatblacksinwax.org/> | Hours change seasonally | Admission fee required for adults and children over age 2

The wax museum is committed solely to the study and preservation of African-American history and presents life-size, life-like wax figures highlighting historical and contemporary personalities of African ancestry. The museum includes themed displays such as slavery, the underground railroad, the Buffalo Soldiers and the civil rights era.

### **Port Discovery**

35 Market Place (at the corner of E. Lombard Street and Market Place), Baltimore, MD 21202  
410-727-8120 | <http://www.portdiscovery.org/> | Hours change seasonally | Admission fee required for adults and children over age 2 | Family Memberships start at \$104

The Children's Museum in Baltimore offers three floors of interactive, educational exhibits and programs for children ages 2-12 years old. Special areas for children under the age of 4 include "The Diner," a realistic 50's style diner where kids can cook and serve food to their parents and ring up their order at the cash register. An indoor soccer field allows kids and parents a chance to practice their kicks year-round. In the Fill'er Up Station, children can pack the car and fill it with gas. A Sensation Station is designed for the youngest visitors to explore sensory stimulating activities. Special events such as storytimes and musical performances are scheduled periodically.

### **The Reginald F. Lewis Museum of Maryland African American History and Culture**

830 E. Pratt Street, Baltimore, MD 21202  
443-263-1800 | <http://www.rflewismuseum.org/> | Hours change seasonally | Admission fee required for adults and children over age 6

The Reginald F. Lewis Museum is the largest African-American museum on the East Coast it includes a 2,000 seat theater, an oral history studio, classrooms, and exhibition space. The Inaugural Exhibition of the museum explores three areas: Family and Community, Labor that Built a Nation, and Arts and Enlightenment.

### **Top of the World Observation Level**

World Trade Center, 401 E. Pratt Street, Baltimore, MD 21202  
410-837-8439 | <http://www.viewbaltimore.org/> | Hours change seasonally | Admission fee required for adults and children over age 3

The four sided glass-enclosed observation deck is the perfect vantage point from which to see almost any area of the city. Telescopes are available for closer views of the sights.

### **The Walters Art Museum**

600 North Charles Street, Baltimore, MD 21201  
410-547-9000 | <http://thewalters.org/> | Hours: Wed–Sun, 10 a.m.-5 p.m. | Free admissions

The Walters Art Museum presents an overview of world art from pre-dynastic Egypt to 20th-century Europe. The museum creates special drop-in art activities on Saturday and Sunday mornings for children coinciding with special exhibits or highlighting items in the permanent collections. Programs for preschoolers/homeschoolers offered during the week. Family festivals held throughout the year. Children's tours offered on Saturdays- pair the reading of a children's book with a teacher-led tour of specific artwork that relates to the book subject. Art Cart available throughout the museum filled with self-guided children's activities.

## MUSIC CLASSES

### Music Together: It's Groovy Baby!

Bettina Leu, Center Director  
bettina@itsgroovybaby.com  
(443)895-4802 | <http://www.itsgroovybaby.com/>

*Please check website for class fees and schedules.* Classes are offered in Towson, Pikesville, and Westminster.

### Music Together of Charm City

Miriam Hack, Director  
410-825-3881 | <http://www.musictogethercharmcity.com/>

*Please check website for class fees and schedules.* Classes are offered at two Baltimore locations.

### Music for the Young Child

6200 N. Charles Street, Baltimore , MD 21212  
410-343-3333 | <http://www.musicfortheyoungchild.com/>  
email: [peggy@musicfortheyoungchild.com](mailto:peggy@musicfortheyoungchild.com)

*Please check website for class fees and schedules.* Parent/Child piano or ukelele/guitar classes also offered.

### Evergreen Academy- Music Together Classes

Zoë Johnstone Stewart, Director  
410-419-9260 | <http://www.evergreen-academy.com/>  
email: [contact@evergreen-academy.com](mailto:contact@evergreen-academy.com)

*Please check website for class fees and schedules.* Classes offered in various locations.

## GYMNASTICS/DANCE

### Hoppin Tots Children's Gym

6241 Falls Road, Baltimore, MD 21209  
410-337-7012 | <http://www.hoppintotsgym.com/>

HoppinTots Children's Gym is designed especially for young children ages 6 months to 6 years. They offer a variety of programs including parent-participation classes, 45-minute and 1-hour gymnastics classes without parents, and 1-1/2 and 2-hour drop-offs.

### **Rebounders Gymnastics**

7 W. Aylesbury Road, Suite A, Timonium, MD 21093

410-252-3374 | <http://www.rebounders.com/>

Rebounders Gymnastics is a well-established and fully-equipped facility providing a family friendly atmosphere of structured gymnastics and much more. Rebounders is a safe place for your child to participate in age appropriate gymnastics, dance, cheer, special needs, fitness, home school, field trips, drop off programs as well as pre and competitive teams.

### **Ultimate Gymnastics of Baltimore**

1405 Tangier Drive, Middle River, MD 21220

410-335-7788

### **Sokol Baltimore**

410-276-9798 | <http://www.sokolbaltimore.org/>

Sokol Baltimore is a nonprofit organization dedicated to promoting personal and community health by offering gymnastics, fitness, educational and cultural activities. We strive to create well-rounded individuals who understand the value of an active lifestyle, volunteerism, self-discipline, and respect for others.

### **Gerstung Center at Coppermine Fieldhouse**

1400 Coppermine Terrace, Baltimore, MD 21209

(410) 337-7781 | <http://www.gerstung.us/>

Movement education for ages 10 months to 6 years.

### **Technique Tumble**

443-739-3319 | <http://www.techniquetumble.info/>

Provides various classes on proper tumbling technique for children of all ages for various sports ranging from cheerleading to gymnastics.



## LOCAL PRESCHOOLS

*These preschools are close to COTW and/or are recommended by co-op attendees. They are not affiliated with COTW. See Baltimore's Child for a more complete list of preschools.*

### **Ascension Lutheran Preschool**

7601 York Road, Towson, MD 21204

410-825-1725 (Kati Ball) | <http://www.ascensiontowson.org/nursery-school/>

The Ascension Lutheran Church Nursery School & Kindergarten program provides a nurturing environment addressing the needs of the total child. Through developmentally appropriate teaching strategies, instructional programs offer age appropriate learning experiences that encourage social, emotional, spiritual, and academic growth. Educational programs are MSDE (Maryland State Department of Education) approved for ages 2-4 and Kindergarten.

### **Elmhurst Nursery School**

4023 Roland Avenue, Baltimore, MD 21211

410-889-6180 | <http://www.elmhurstnurseryschoolbaltimore.com/>

The Elmhurst Nursery School is an independent school for boys and girls from two years through Kindergarten. It is accredited by the Maryland State Department of Education.

### **First English Lutheran Preschool (FELP)**

3807 N Charles Street, Baltimore, MD 21218

410-235-5887 | <http://felpkids.com/>

Offers programs for ages 2 through Kindergarten as well as extended day care. FELP also provide specials classes for in subjects of music, art, language, and movement.

### **Govans Presbyterian Preschool**

5826 York Road, Baltimore, MD 21212

410-435-8189 (Pam Ferguson) | [http://www.govanspres.org/govanspres/pre\\_school](http://www.govanspres.org/govanspres/pre_school)

Provides specific classes for ages 2-5. The Preschool operates with a Child Care Program that wraps around the class schedule and provides continuous care from 7:30 a.m. - 5:30 p.m. year-round.

### **Grace Preschool**

Grace United Methodist Church

5407 N. Charles Street, Baltimore, MD 21210

410-532-2235 | <http://www.gracepreschoolbaltimore.com/>

Grace Preschool is an outreach program of the Grace United Methodist Church offering an excellent educational program to the community. Grace is a traditional preschool program with classes for children two years of age through Kindergarten.

**Redeemer Parish Day School**

5603 N. Charles Street, Baltimore, MD 21210

410-435-9510 | <http://www.redeemeronline.com/youth/dayschool/>

The Parish Day School education strives to promote spiritual, physical, intellectual, emotional, and social growth along with involvement of the child's family in the life of the school. They offer programs for ages 2 to Kindergarten.

**Woodbrook Early Education Center (The Wee Center)**

25 Stevenson Lane, Towson, MD 21212

410-377-8918 | <http://weecenter.net/index.html>

The Woodbrook Early Education Center is a ministry of the Christian Education program at Woodbrook Baptist Church . The WEE Center encourages the healthy growth of the whole child, through developmentally appropriate activities and experiences, in a warm and nurturing environment. They offer programs for ages 2-4. They are licensed by the Maryland State Office of Child Care Administration and accredited by the National Association for the Education of Young Children (NAEYC).





# EAT

---

## FARMS

### PICK-YOUR-OWN

For a comprehensive list of Maryland Pick Your Own (PYO) farms & crop availability, please check the website: <http://www.pickyourown.org/MDbalt.htm>.

#### Larriland Farm

2415 Woodbine Road (Route 94), Lisbon, MD 21797  
301-854-6110 or 410-442-2605 | <http://www.pickyourown.com/>

*Operational hours vary depending on season. Please call or check website for farm hours.*

#### Hybridoma Organic Fruit Farm

13734 Baldwin Mill Road, Baldwin, MD 21013  
443 902 -0370 | <http://www.hybridomafarm.com/>

*Operational hours vary depending on season. Please call or check website for farm hours.*

#### Baughers' Orchard

1236 Baughers Road, Westminster, MD 21158  
410-857-0111 or 410-848-5541 | <http://www.baughers.com/>

*Operational hours vary depending on season. Please call or check website for farm and market hours.*

#### Butler's Orchard

22200 Davis Mill Road, Germantown, MD 20876  
301-972-3299 | <http://www.butlersorchard.com/>

*Operational hours vary depending on season. Please call or check website for farm and market hours.*

#### Clark's Elioak Farm and Petting Zoo

10500 Clarksville Pike, Ellicott City, MD 20142  
410-730-4049 (Farm) or 410-730-0664 (Petting Zoo) | <http://www.clarklandfarm.com/>

*Operational hours vary depending on season. Please call or check website for farm and petting zoo hours.*

**Weber's Farm**

2526 Proctor Lane, Parkville, MD 21234

410-668-4488 | <http://www.weberscidermillfarm.com/>

*Operational hours vary depending on season. Please call or check website for farm and market hours.*

## INTERNATIONAL GROCERS AND PUBLIC MARKETS

**Al Madina Halal Meat**

1808 Woodlawn Drive, # E, Gwynn Oak, MD

(410) 265-8300 | Hours: 10 a.m.-9 p.m., 7 days (Meat Dept. open from 10 a.m.-8 p.m.)

**Asia Food**

5224 York Road, Baltimore, MD 21212

410-323-8738

Hours: Mon-Sat, 9 a.m. - 6 p.m.; Sun, 10 a.m.- 5 p.m.

**H Mart (Asian Food Grocery Store)**

800 N. Rolling Road, Catonsville, MD 21228

(443) 612-9020 | <http://www.hmart.com/> | Hours: 8 a.m.-10 p.m., 7 days

**Towson Oriental Food Market**

8424 Willow Oak Road, Parkville, MD 21234

(410) 665-8432

Hours: Mon/Wed/Thu, 10 am - 7:30 pm; Fri, 10 a.m. - 8 p.m.; Sat, 9 a.m. - 8 p.m.;  
Sun, 9 a.m. - 7 p.m.; Closed Tuesdays

**Punjab Groceries & Halal Meat (Middle Eastern foods and spices)**

345 E. 33rd Street, Baltimore, Maryland 21218

410-662-7844 | Open 24 hours, daily

**Pavan Foods & Restaurant (South Indian Vegetarian Foods)**

8904 Harford Road, Parkville, MD 21234

410-663-3201 | <http://pavanfoods.webs.com/> | Hours: Monday 10 a.m. -5 p.m., Tuesday-Sunday 10 a.m.-9 p.m.

### **Baltimore Outdoor Farmers Markets**

Every Sunday underneath the Jones Falls Expressway at Holliday & Saratoga streets  
April to December, 7 a.m.-Noon

<http://www.promotionandarts.com/index.cfm?page=events&id=3>

### **Cross Street Market (Federal Hill)**

1065 S. Charles St. (Cross Street between Charles and Light), Baltimore, MD 21230

<http://www.southbaltimore.com/shop/crossmkt.html> | Hours: Mon–Sat, 7 a.m. - 7 p.m.

Various food markets and restaurants.

### **World Famous Lexington Market (West Baltimore)**

400 W. Lexington Street, Baltimore, MD 21201

410-685-6169 | <http://www.lexingtonmarket.com/> | Hours: Mon–Sat, 8:30 a.m.-6 p.m.

One of Baltimore’s oldest markets features seafood and international cuisine, along with fresh-baked delights and homemade confections. Enjoy live music at the market every Friday and Saturday with bands performing jazz, reggae and more.

### **Broadway Market (Fells Point)**

1640- 41 Aliceanna Street, Baltimore, MD 21231

<http://www.bpmarkets.com/bwy1.html> | Hours: Mon–Sat, 7 a.m.- 6 p.m.

### **Northeast Market (Near Johns Hopkins Hospital)**

2101 E. Monument Street, Baltimore, MD 21205

Mon–Sat, 7 a.m. - 6 p.m.

Northeast Market is more like a food court than some of the other markets. You can pick up fresh vegetables or seafood, but most of the vendors are selling, sandwiches, salads, cooked entrees and pizza. There are several lunch counters too.



### **Belvedere Square**

529 E. Belvedere Avenue, Baltimore, MD 21212

(410) 323-2396 | <http://www.belvederesquare.com/index.cfm>

*Retail Store Hours:*

Mon–Sat, 10 a.m.-6 p.m. | Sun, Noon-5 p.m.

*The Market at Belvedere Square:*

Mon–Sat, 10 a.m.-8 p.m. | Sun, 10 a.m.-5 p.m.

*Note: Atwater's Bakery and Coffee opens at 8am everyday*

Located at the southeast corner of York Road and Northern Parkway, Belvedere Square offers a dynamic mix of retail shopping, dining, and convenient service options. In all, we feature more than 110,000 square feet of fashion apparel, shoes, home furnishings, restaurants and everyday services – and a fresh market that's second to none.

## **CHILD-FRIENDLY RESTAURANTS**

### **Iggies Pizza**

818 Calvert Sreet, Baltimore, MD 21202

410-528-0818 | <http://www.iggiespizza.com/> | Hours vary depending on the season, call ahead for hours.

### **Café Hon**

1002 West 36th Street, Baltimore, MD 21211-2415

410-243-1230 | <http://cafehonor.com/> | Open 7 days a week, call ahead for hours, brunch hours available.

Diner food with Bawlmer style, hon! Casual food, local flavor. Weekly specials.

### **Paper Moon Diner**

227 W 29th Street, Baltimore, MD 21211

410 889 4444 | <http://papermoondiner24.com/> | Open 7 days a week, call ahead for hours.

The Papermoon Diner offers an eccentric, eclectic, technicolor dining experience that might be best described as “comfort food meets Baltimore with a twist.” We're vegetarian and raging-carnivore friendly, with a jam-packed menu featuring everything from meat loaf to crab quesadillas, from vegan nachos to peanut butter and jelly French toast, from homemade chili to shrimp and grits—and so much more. Walls & ceiling are covered in toys.

### **Golden West Cafe**

1105 W 36th Street, Baltimore, MD 21211

410-889-8891 | <http://www.goldenwestcafe.com/> | Open 7 days a week, call ahead for hours.

Breakfast & brunch based on traditional New Mexican fare. Eclectic lunch and dinner menu. New Mexican food and very kid-friendly atmosphere. Ladies bathroom even has a real baby changing table plus lots of high chairs and even toys in the waiting area if you have to wait to be seated. Kids menu offered as well for reasonable rates.

### **Tamber's**

3327 St. Paul Street, Baltimore, MD 21218

410-243-5777 | <http://www.tambersrestaurant.com/> | Open 7 days a week, call ahead for hours.

Indian and Western cuisine. Brunch. Eat in or carry out. Circa 1950's inspired restaurant.

### **Clementine**

5402 Harford Road, Baltimore, MD 21214-2215

410-444-1497 | <http://bmoreclementine.com/> | Open Tuesday–Sunday, closed Mondays

“Fancypants comfort food with a cross-cultural twist.” Saturdays & Sundays open for breakfast. Offers a small play area for children. Dinner menu changes daily.

### **The Bowman Restaurant & Pub**

9306 Harford Road, Parkville, MD 21234-3121

410-665-8600 | <http://www.bowmanrestaurant.com> | Open 7 days a week, call ahead for hours.

We serve great food in a casually elegant setting. From our juicy burgers to famous crab cakes, our menu has something for everyone.

### **Red Canoe Bookstore Cafe**

4337 Harford Road, Baltimore, MD 21214

410-444-4440 | <http://www.redcanoe.bz> | Open 7 days a week, call ahead for hours.

Coffee, baked goods, Wraps, salads, sandwiches, soup. Kids' menu. Bookstore. Preschool sing along on at 10:30 a.m. on the 1st and 3rd Wednesdays of the month.

**Alonso's/Loco Hombre**

413-415 W Cold Spring Lane, Baltimore, MD 21210

410-889-2233/410-235-3433 | <http://www.alonsos.com/index.php>

Two restaurants under one roof equals a large variety of offerings of American bar food, Mexican and Tex-Mex fare.

**Evergreen Cafe**

501 W. Cold Spring Lane, Baltimore, MD 21210

410-235-8118 | Open daily, call for restaurant hours.

Coffee shop and café near the co-op offers comfortable couches and a relaxed atmosphere. Often filled with mothers and children. Sandwiches, soups, salads, pastries, desserts & coffee.

**IHOP (various locations)**

<http://www.ihop.com/> | Open daily, call restaurant for specific location hours.

Two closest locations to COTW is Towson and Nottingham. Please check website for restaurant hours and menu.

**Bertucci's Italian Restaurant (various locations)**

<http://www.bertuccis.com/> | Open daily, call restaurant for specific location hours.

Three closest locations to COTW is White Marsh, Timonium, and Bel Air. Please check website for restaurant hours and menu.

**Red Robin (various locations)**

<http://www.redrobin.com/> | Open daily, call restaurant for specific location hours.

Three closest locations to COTW is Towson, White Marsh, and Owings Mill. A new location will be opening late fall 2013 at Canton Crossing in Canton neighborhood of Baltimore City. Please check website for restaurant hours and menu.

**Ledo Pizza (various locations)**

<http://www.ledopizza.com> | Open daily, call restaurant for specific location hours.

Three locations closest to COTW is Cahrels Village, Federal Hill, and White Marsh.

**Johnny's**

4800 Roland Park Avenue, Baltimore MD 21210

(410) 773-0777 | <http://johnnysdownstairs.com/> | Open daily with breakfast, lunch, and dinner hours. Call or check website for restaurant hours and menu.



# SHOP

---

## BOOK STORES

### Barnes and Noble Stores

<http://www.barnesandnoble.com/>

Locations in Charles Village, Inner Harbor, Bolton Hill, Towson and White Marsh. Each location offers a weekly story time. Schedule varies by location.

### The Children's Bookstore

737 Deepdene Road, Baltimore, MD 21210

410-532-2000 | <http://www.thecbstore.com/> | Hours: Mon–Sat, 10 a.m.-5:30 p.m.

The Children's Bookstore specializes in fine children's literature and illustration. Story times and appearances by book authors are scheduled periodically.

### The Red Canoe

4337 Harford Road, Baltimore, MD 21214

410-444-4440 | <http://www.redcanoe.bz/>

Sells children's books as well as food and coffee in the café. Weekly events include story times and musical performances. Zoe Johnstone Music sing-along for toddlers and preschoolers on the 1<sup>st</sup> and 3<sup>rd</sup> Wednesday of the month at 10:30am.

### The Ivy Bookshop

6080 Falls Rd. (Lake Falls Village Shopping Center), Baltimore, MD 21209

410-377-2966 | <http://www.theivybookshop.com/> | Hours: Mon–Fri, 10 a.m.-7 p.m.;

Sat, 10 a.m.-6 p.m.; Sun, 11 a.m.-5 p.m.





## FREE STUFF

### **Baltimore Freecycle Group**

<http://groups.yahoo.com/group/freecyclebaltimore/>

“The Freecycle Network™ is made up of 5,107 groups with 9,390,917 members around the world. It's a grassroots and entirely nonprofit movement of people who are giving (and getting) stuff for free in their own towns. Membership is free and everything posted must be FREE, legal and appropriate for all ages.”

Search for items you would like and make arrangements to pick them up at other members' house. And give away your items too! The Baltimore group has over 7,000 members.

### **The Baltimore Free Store**

<http://freestorebaltimore.org/>

An all-volunteer organization that collects donated and salvaged items to make available to people without charge. The organization currently does not have a “store,” but holds monthly Free Market events where you “shop” for free items or drop off donations. See website for current Free Market event dates.

### **The Book Thing of Baltimore, Inc.**

3001 Vineyard Lane, Baltimore, MD 21218

410-662-5631 | <http://www.bookthing.org/> | Hours: Sat–Sun, 9 a.m.-6 p.m.

All volunteer organization that collects and donates used and new books of all genres.

## CLOTHING (CONSIGNMENT/USED)

### **Elephant Trunk (Children)**

317 Main Street, Reisterstown, MD 21136

410-517-1200 | <http://www.theelephantstrunk4kids.com/> | Hours: Tue–Fri, 10 a.m.- 4 p.m.;

Sat, 11 a.m.-4 p.m.; Sun–Tue, closed.

### **Ladybugs and Fireflies (Children)**

1049 South Charles St. (Federal Hill), Baltimore, MD 21230

410-244-0472

**Little Lamb Consignment (Children)**

5002 Lawndale Avenue. (Roland Park), Baltimore, MD 21210

410-433-9086 | <https://www.facebook.com/littlelambconsignments> | Hours: Tue–Sat, 10 a.m.-5 p.m.

**The Tot Spot (Children & Maternity)**

10811 Reisterstown Road, Owings Mills, MD 21117

410-654-1147 | <http://www.thetotspotonline.com/> | Hours: Mon–Sat, 10 a.m.-5 p.m.

**Tried But True (Children & Adults)**

10744 York Road, Cockeysville, MD 21030

410-666-9265 | <http://www.triedbuttrue.com/> | Hours: Mon, Wed, Fri, Sat, 10 a.m.-4 p.m.; Tues & Thurs, 10 a.m.-5 p.m.; Sun, Noon-4 p.m.

**Value Village Thrift Store (Children & Adults)**

<http://www.valuevillage.com/Default.aspx>

Several locations throughout the Baltimore metro area. Please check website for location and hours.

**The Wise Penny (Children & Adults)**

5902 York Road, Baltimore, MD 21212

410-435-3244 | [http://www.jlbalt.org/?nd=support\\_wisepenny](http://www.jlbalt.org/?nd=support_wisepenny) | Hours: Tue & Thurs, Noon- 7 p.m.; Wed, Fri & Sat, 10 a.m.-5 p.m.; Sun, Noon- 5 p.m.; Closed Mon.

The Wise Penny is a thrift store owned and operated by the Junior League of Baltimore. The shop provides quality new and "gently used" clothing and household items at affordable prices. Proceeds are used for funding community projects.

**The Lily Pad of Towson (Children & Maternity)**

6909 York Road (Rodger's Forge), Baltimore, MD 21212

410-377-0025 | <http://www.lilypadoftowson.com/about.aspx> | Hours: Mon–Wed, 10 a.m.-4 p.m.; Thurs, 10 a.m.-7 p.m.; Fri & Sat, 10 a.m.-4 p.m.; Closed Sun.

### **Maryland Tot Swap Consignment Events**

<http://www.totswap.net/> | Dates and locations vary throughout the year. Please check website for more information.

TotSwap provides an excellent way for you to sell your new and gently used children's and maternity items while shopping from the best in name brand and specialty items at great prices!! Items include children's and maternity clothing, shoes, accessories, baby equipment, toys, indoor/outdoor play equipment, books, DVD's, sports equipment and more.

## **CLOTHING (NEW)**

### **Cottage Kidz Boutique (Mt. Vernon)**

1129 Light Street, Baltimore, MD 21230

410-962-5556 | <http://www.cottagekidzboutique.com/>

### **The Pied Piper (Cross Keys)**

32 Village Square (Village of Cross Keys), Baltimore, MD 21210

410-435-2676 | <http://www.piedpiperchildrenswear.com/> | Hours: Mon–Sat, 10 a.m.-6 p.m.;  
Thurs, 10 a.m.-8 p.m.; Sun, Noon-4 p.m.

### **The Corduroy Button**

<http://www.thecordbutton.com/t-locations.aspx>

Fells Point location

1635 Thames Street, Baltimore, MD 21231

410-276-5437 | Hours: Mon–Sun, 11 a.m.-7 p.m.

Towson location (The Shops at Kenilworth)

858 Kenilworth Drive, Towson, MD 21204

410-823-5437 | Hours: Mon–Sat, 10 a.m.-9 p.m.; Sun, Noon-5 p.m.

### **Soft and Cozy Baby (Hampden)**

915 W 36th Street, Baltimore, MD 21211

410-467-2229 | <http://www.softandcozybaby.com/>

### **Old Navy**

[www.oldnavy.com](http://www.oldnavy.com)

Two locations closest to COTW are Lutherville and White Marsh. Please check website for store hours and directions.

### **The Avenue at White Marsh**

(Carter's, Crazy 8, Justice, Old Navy)

8123 Honeygo Boulevard, Baltimore, MD 21236

410-933-3650 | <http://www.theavenueatwhitemarsh.com/>

### **The Gallery (Inner Harbor)**

(The Children's Place, Gap Kids)

200 E. Pratt Street, Baltimore, MD 21202

410-933-3650 | <http://www.thegalleryatharborplace.com/>

### **Towson Town Center**

(Gap Kids, Gymboree, Janie and Jack, Naartjie Kids, The Children's Place)

825 Dulaney Valley Road, Towson, MD 21204

410-494-8800 | <http://www.towsontowncenter.com/>

### **Target**

<http://www.target.com/>

Several locations close to COTW are Baltimore City, White Marsh, and Towson. New location in Canton Crossing opening late Fall 2013. Please check website for store hours and directions.

## **CHILDREN'S SHOES**

### **Payless Shoe Source**

<http://www.payless.com/store/>

Various locations throughout the Baltimore metro area. Please check website for store location and hours.

### **Sassanova (Harbor East)**

805 Aliceanna Street, Baltimore, MD 21202

410-244-1114 | <http://www.sassanova.com/>

**Stride Rite (Towson Town Center)**

825 Dulaney Valley Road, Towson, MD 21204  
410-828-7225 | <http://www.striderite.com>

**Nordstrom (at Towson Town Center)**

700 Fairmount Avenue, Towson, MD 21286  
410-296-2111 | Children's Shoes are located on Level 3 and at Nordstrom Rack on bottom floor.

**Towson Bootery**

810 Kenilworth Drive, Towson, MD 21204  
410-296-0640 | <http://www.towsonbootery.com/>

**Trohv (formerly Red Tree in Hampden)**

921 W. 36<sup>th</sup> St, Baltimore, MD 21211  
410-366-3456 | <http://www.trohvshop.com/>

## TOY STORES

**aMuse**

<http://www.amusetoys.com/> | Two locations in the Baltimore metro area:

**Fells Point**

1623 Thames Street, Baltimore, MD 21231, (410) 342-5000

**Quarry Lake (Pikesville)**

2576 Quarry Lake Drive, Baltimore, MD 21209, 410-415-0000

**Atomic Books**

3620 Falls Road, Baltimore, MD 21211  
410-662-4444 | <http://www.atomicbooks.com/>

**Barston's Child's Play (Cross Keys)**

86 Village Square, Baltimore, MD 21210  
410-435-0804 | <http://www.barstonschildsplay.com/>

**Shenanigans (Roland Park)**

5004 Lawndale Avenue, Baltimore, MD 21210  
410-532-8384 | <http://www.shananiganstoyshop.com/>

## **FAMILY ENTERTAINMENT**

---

### **Pumpkin Theatre Main Stage**

Hannah More Arts Center

St. Timothy's School for Girls

8400 Greenspring Avenue, Stevenson, MD 21153

410-828-1814 | <http://www.pumpkintheatre.com/>

Five productions are staged at St. Timothy's School in Baltimore County (Main Stage and Pathway programs) and four productions are staged at Centerstage in Baltimore City (Kinderseries programs). Pumpkin provides programming primarily to Baltimore City and Baltimore County but also reaches a substantial number of residents in Carroll County. The main targeted demographic is families with children as most productions target an audience range of 3 to 10 years of age; however, the productions are not only for the young, but young-at-heart. Pumpkin believes children's theater should be enjoyable to all – regardless of age. Shows are Saturday and Sunday at 1 p.m. and 3 p.m. A 3-Play, 4-Play, and 5-Play subscriptions are available for purchase. Prices vary for single advance, group, and at-the-door tickets. Please call or check website for current pricing and show times.

### **Adventure Theatre (Glen Echo Park)**

7300 MacArthur Boulevard, Glen Echo, MD 20812

301-634-2270 | <http://www.adventuretheatre-mtc.org/index.html>

Adventure Theatre (founded in 1951) and Musical Theater Center (founded in 1986) merged into one organization in 2012. The combined entity is called Adventure Theatre MTC. Located in Glen Echo Park (Glen Echo, MD) and The Wintergreen Plaza (Rockville, MD), Adventure Theatre MTC (ATMTC) cultivates new generations of artists and life-long audiences by creating memorable theatrical productions and experiences and by providing young people the highest quality training in musical theater and theater.

### **The Puppet Co. Playhouse (Glen Echo Park)**

7300 MacArthur Boulevard, Glen Echo, MD 20812

301-320-6668 | [www.thepuppetco.org](http://www.thepuppetco.org)

At the Puppet Co., we have a passion for puppets and the art of puppetry. Our critically acclaimed and award-winning puppet shows incorporate hand puppets, rod puppets, marionettes (string puppets), masks, costume figures, and every trick in the book to entertain and amaze family audiences.

### **Baltimore Symphony Orchestra Family Series**

Joseph Meyerhoff Symphony Hall  
1212 Cathedral Street, Baltimore, MD 21201  
410-783-8000 | <http://www.bsomusic.org/bsokids/>

Saturdays at 11 a.m. the BSO performs concerts created especially for children. The programs showcase music, dance, and storytelling. The BSO Family Fun Zone features attractions for the whole family, beginning at 10 a.m. before each concert. Explore the Music and Arts instrument petting zoo, learn about exotic animals from the Maryland Zoo's ZOOmobile or get your face painted in the Meyerhoff lobby.

### **Candlekids (Candlelight Concerts Children's Series)**

Horowitz Performing Arts Center, Smith Theatre  
Howard Community College  
10901 Little Patuxent Parkway, Columbia, MD 21044  
410-997-2324 | <http://www.candlelightconcerts.org/candlekids.html> | Email:  
[info@candlelightconcerts.org](mailto:info@candlelightconcerts.org)

Candlelight offers imaginatively conceived programs designed to spark a child's interest in the performing arts. They present a variety of performing arts programs for children and their families from chamber music to puppetry, mime, theatre, and ballet performances. On event days, performances are at 2:30 and 4:30 p.m. Ticket prices vary for individual and group tickets. Subscriptions are also available. Please call or check website for more information and current ticket prices.

### **Chesapeake Arts Center**

194 Hammonds Lane, Brooklyn Park, MD 21225  
(410) 636-6597 | [www.chesapeakearts.org](http://www.chesapeakearts.org) | Email: [info@chesapeakearts.org](mailto:info@chesapeakearts.org)

Acting classes and shows for audiences of all ages. Shows are in the Studio 194 Theatre. They also feature a Family Music Series. Ticket pricing vary depending on show. Please call or check website for more information and current ticket prices.

### **Imagination Stage**

Lerner Family Theatre  
4908 Auburn Avenue, Bethesda, Maryland 20814  
301-961-6060 | <http://www.imaginationstage.org/>

They strive to produce theatre and arts education programs which nurture, challenge, and empower young people of all abilities.

### **Discovery Theater**

Smithsonian's Ripley Center  
1100 Jefferson Dr. SW, Washington, D.C. 20024  
202-633-8700 | [www.discoverytheater.org](http://www.discoverytheater.org)

Smithsonian's theater for young audiences. They produce live performances that celebrate diversity and strive to present relevant, culturally accurate entertaining programs. Single tickets can be purchased online through their website or [www.residentassociates.org](http://www.residentassociates.org). You may also call the Resident Associates office at 202-633-3030 for more information.

### **Kennedy Center Performances for Young Audiences & National Symphony Orchestra Family Concerts**

The John F. Kennedy Center for the Performing Arts  
2700 F Street, NW, Washington, DC 20566  
800-444-1324 or 202-467-4600 | <http://www.kennedy-center.org/programs/family/>

Pick and choose a minimum of any three shows to create your own custom subscription. Just select the shows best suited for your family based on everyone's interests, ages, and schedules. Many performances sell out early.

### **The Lyric's Performances for Children**

Patricia & Arthur Modell Performing Arts Center at the Lyric  
140 W. Mt Royal Avenue, Baltimore MD 21201  
410-547-SEAT | [www.lyricoperahouse.com](http://www.lyricoperahouse.com)

Check the website for upcoming performances suitable for young audiences. You can also purchase tickets at [www.ticketmaster.com](http://www.ticketmaster.com).

### **Lively Arts for Little Ones**

The Other Barn in Oakland Mills  
5851 Robert Oliver Place, Columbia, MD 21045  
410-730-4610 | Please call ahead for show times and ticket prices.

A lively introduction to the arts for little ones through a series of six 45-minute live performances ideal for children ages 2 to 5 and their parent/caregiver. All children must be accompanied by an adult. Show times are 10 a.m. Group rates and Series Subscriptions are available. Purchase tickets at The Other Barn or at [www.brownpapertickets.com](http://www.brownpapertickets.com)



### **Rainbow Theatre at Slayton House**

Slayton House Theatre

10400 Cross Fox Lane, Columbia, MD 21044

410-730-3987 | Email: [wlevents@columbiavillages.org](mailto:wlevents@columbiavillages.org) | Please call ahead for show times and ticket prices.

Monthly puppet shows and entertainment for children from September through April. Rainbow Theatre shows are held on Fridays at 10 a.m. Sponsored by Wilde Lake Community Association.

### **Children's Playhouse of MD**

CCBC Essex

7201 Rossville Boulevard, Baltimore, MD 21237

(443) 840-2426 | [www.cpmarts.org](http://www.cpmarts.org) | Email: [actorlist@yahoo.com](mailto:actorlist@yahoo.com)

Five productions annually with student performers. Theatre productions for families in the Baltimore area. A community resource for activities, education, and training for young people. Also training in technical theatre, lighting, and stage managing,

### **Columbia Center for Theatrical Arts**

Attn: Melissa Rosenberg

6655 Dobbin Road, #4, Columbia, MD 21045

410-381-0700 | [www.cctarts.com](http://www.cctarts.com) | Email: [info@cctarts.com](mailto:info@cctarts.com)

Offers workshops, conservatory classes, teen professional theater, outreach programs, performances, workshops, internships meant to instill positive values. Programs strive to create a non-competitive environment in which children can learn and grow. Check their website for upcoming performances.

### **Imagination Stage**

Attn: Scott McCormick

4908 Auburn Avenue, Bethesda, MD 20814

301-280-1660 | [www.imaginationstage.org](http://www.imaginationstage.org) | Email: [reception@imaginationstage.org](mailto:reception@imaginationstage.org)

Offers classes for ages 1 through Grade 12 in all aspects of drama including acting, voice and filmmaking. They are a multi-disciplinary theatre arts organization for young people and offer a year-round season of professional shows (adult actors performing for families and classes), after-school programs and summer camps for ages 1-18, and arts-integration professional development training for teachers, students, schools and families. All of the programs are informed by their core belief in making the arts inclusive and accessible to all children, regardless of their physical, cognitive or financial status.

### **Maryland Sings, Inc.**

Attn: Bill Myers

P.O. Box 254, Owings Mills, MD 21117

410-526-7241 | [www.marylandsings.org](http://www.marylandsings.org) | [bill@marylandsings.org](mailto:bill@marylandsings.org)

Theater, dance, voice performances throughout the year. *Maryland Sings* is a 501(c)(3) non-profit regional ensemble of young people who have a common love for music. Its mission is to bring together musically talented singers in a professional musical performance environment to teach, inspire and cultivate them to be positive role models in all aspects of their lives. Check their website for show locations and times.

### **Open Space Arts**

Attn: Nina Knoche

16 Hanover Road, Reisterstown, MD 21136

410-521-0478 | [www.osarts.org](http://www.osarts.org) | Email: [openspaceartsmd@gmail.com](mailto:openspaceartsmd@gmail.com)

Open Space Arts is a community arts organization based in Reisterstown, MD. They are committed to the philosophy of art for everyone, and offer a variety of classes, shows, events and workshops to promote just that. They hope to strengthen the community through the arts. Check their website for information about performances and programs.

### **Way Off Broadway Dinner Theatre & Children's Theatre**

5 Willowdale Drive, Frederick, MD 21702

301-662-6600 | [www.wayoffbroadway.com](http://www.wayoffbroadway.com) | Email: [wob@wayoffbroadway.com](mailto:wob@wayoffbroadway.com)

Productions for the children's theatre are adaptations of popular children's stories written specifically for Way Off Broadway. A favorite spot for families looking for a good time on the weekends, birthday parties, and school groups, they also provide drama classes in which students put on a show for family and friends.

### **The Young Artists Theatre**

8178 Lark Brown Road, #102, Elkridge, MD 21075

301-604-2844 | <http://www.yatheatre.com/>

This drama school/children's theater produces a variety of performances in multiple locations. Check the website for upcoming programs.

## OUTDOOR CONCERTS

### Harborplace Amphitheater

*Northwest corner of the Inner Harbor, between the Light Street Pavilion and the Pratt Street Pavilion of HarborPlace.*

<http://www.baltimore.to/Amphitheater/index.html>

Every weekend from Memorial Day to Labor Day, Harborplace in the Inner Harbor hosts musicians in its amphitheater near Pratt and Light streets. Performances are Saturdays at 8 p.m. and 11 p.m., and Sundays at 5 p.m. Other performances are also available at other times.

### Summer Sounds at the Square

Belvedere Square

540 E. Belvedere Avenue, Baltimore, MD 21212

<http://www.belvederesquare.com/index.cfm?page=events&id=7>

Fridays beginning at 6 p.m., Belvedere Square is the place to be for free concerts. Retail shops, restaurants, and market merchants set up booths, and children like to dance in the open square in front of the main stage.

### Mount Vernon Park

*Under the Washington Monument in West Mt. Vernon Park at Charles and Monument Streets.*

[http://wtmd.org/radio/?page\\_id=783](http://wtmd.org/radio/?page_id=783)

WTMD's First Thursday Concert in the Park features several local and national artists. Performances begin at 5:30 p.m. on the first Thursday of each month during the summer and are free. Food and drinks are available for purchase. Bring a lawn chair or blanket, kick back, and enjoy the tunes. The schedule is not published ahead of time, so please check website for concert information.

### Patterson Park

*The Pagoda in the park, near Patterson Park Avenue.*

<http://pattersonpark.com/>

*PNC Concerts in Patterson Park, produced by the Friends of Patterson Park and WYPR 88.1 FM, are held throughout the summer. Bring a blanket, some food, sit back relax and enjoy.*

## MISCELLANEOUS

---

### PARTY LOCATIONS

#### **Baltimore Street Car Museum, Inc.**

1901 Falls Road, Baltimore, MD 21211

410-547-0264 | <http://www.baltimorestreetcar.org/>

When you book the Museum, you will have use of our Visitor's Center facilities. The auditorium features their own "Trolley Theatre" in which children can watch a video about streetcars or perhaps you'd like to bring your own along to show.

#### **YMCA, Stadium Place**

900 E. 33rd Street, Baltimore, MD 21218

410-889-9622 | <http://ymaryland.org/harry-jeanette-weinberg-family-center-y>

Room available for party/food and playground for activity.

#### **Rebounders Gymnastics Center Pre-School Gym**

7 W Aylesbury Road, # A, Timonium, MD 21093

410-252-3374 | <http://www.rebounders.com/>

Rebounders Gymnastics Birthday Parties give your child the opportunity to enjoy the entire gym while under the supervision of their dedicated and responsible staff. They will get to enjoy time on the trampoline, in the foam pit, on the rope swing, with the parachute, and in an inflatable moon bounce!

#### **Kids First Swim School**

9970 York Road, Cockeysville, MD

410-666-2966 | <http://www.kidsfirstswimschools.com/index.html>

Two-hour long parties begin with an hour private splash in the pool followed by a party with food etc. in a private room.

#### **Stoneleigh Bowling Center**

6703 York Road, Baltimore, MD 21212

410-377-8115 | <http://stoneleighlanes.com/default.asp?Page=Home>

Bowling parties are a fun and inexpensive way to celebrate your special occasion.

**Carrie Murray Nature Center**

1901 Ridgetop Road, Baltimore MD 21207

Tel: 410-396-0808 | <http://www.carriemurraynaturecenter.org/>

**Irvine Nature Center**

11201 Garrison Forest Road, Owings Mills MD 21117

443-738-9200 | <http://www.explorenature.org/>

**The Painting Workshop**

1605 Sulgrave Avenue, Baltimore MD 21209

Tel: 410.902.9799 | <http://www.thepaintingworkshop.com/>

**DOCTORS/URGENT CARE****Dr. Alicia Morgan-Cooper, Pediatrician**

1 East University Parkway (across the street from the Co-Op), Suite 109, Baltimore, MD 21218

410-235-1601 | <http://villagepediatricsmd.com/>

Dr. Alicia Morgan-Cooper is a Fellow of the American Academy of Pediatrics and is board certified in General Pediatrics.

**Johns Hopkins Community Physicians at Wyman Park – Pediatrics**

*Edward Bartlett, M.D., Grace Gelletly, M.D., Tina Kumra, M.D., Ardele Shefchek, M.D.*

3100 Wyman Park Drive, Baltimore, MD 21211

410-338-3071

[http://www.hopkinsmedicine.org/community\\_physicians/locations/baltimore\\_city/wyman\\_park.html](http://www.hopkinsmedicine.org/community_physicians/locations/baltimore_city/wyman_park.html)

**Dr. Jay Gopal**

*Chief of Pediatrics, Union Memorial Hospital*

201 E University Parkway, 82nd Floor, Suite 233, Baltimore, MD 2121

410-554-2596

**Dr. Ralph Brown**

2435 W Belvedere Avenue, Suite 52, Baltimore, MD 21215  
(410) 601-8301

**Hand in Hand**

Kay Halle, Parent Coaching

410-467-9339 | <http://www.handinhandparenting.org/> | [kayhalle@hereforyou.com](mailto:kayhalle@hereforyou.com)

Kay Halle is a parenting coach. With her Hand in Hand training, she offers parent education and support programs to parents and caregivers in the Baltimore area.

Last updated: 8/2011

## CHILDCARE/BABYSITTING

**Loyola Greyhound** | <http://www.loyolagreyhound.com/>

Check for childcare options in the Classified section.

**Johns Hopkins Student Employment Website** | <http://www.jhu.edu/stujob/>

Post a job and your position will be available online within the next 24 hours.

**Care.com** | <http://www.care.com/>

Look for childcare, babysitters, tutors, housekeepers etc. or post your own ad. This website offers background checks, references and reviews from other care-seekers. To take full advantage of all features you have to pay a fee.

**Craigslist.org** | <http://baltimore.craigslist.org/>

Search for a babysitter/nanny/daycare and/or post the need for childcare. **All postings are free, but be sure to check references and/or do a background check before hiring anybody through Craigslist.**

**Baltimore County Family Child Care Association** | <http://www.bcfcca.com/index.htm>

BCFCCA is a Child Care resource base, which provides a free Child Care referral service, "Communicate", for families in our community.

## FAMILY CAMPING/HIKING

### Maryland

---

#### **Assateague State Park**

7307 Stephen Decatur Highway, Berlin, MD 21811  
410-641-2120 | <http://www.nps.gov/asis/index.htm>

Assateague State Park is Maryland's only oceanfront park. It is located on Assateague Island, a barrier island bordered by the Atlantic Ocean on the east and the Sinepuxent Bay on the west. Its two miles of ocean beaches offer swimming, beachcombing, sunbathing, surfing and fishing. The bayside offers visitors the chance to explore secluded coves by canoe or kayak. The marsh areas have a variety of wildlife, including deer, waterfowl and feral horses. Ocean City is approximately nine miles north of the park and can be seen from the island. The historic town of Berlin is less than eight miles away. Quaint shops, an historic hotel, and small restaurants give visitors the chance to step back in time. Berlin was the filming location for two major motion pictures, *Runaway Bride* and *Tuck Everlasting*.

#### **Catoctin Mountain Park**

6602 Foxville Road, Thurmont, MD 21788  
301-663-9388 | <http://www.nps.gov/CATO/index.htm>

Catoctin Mountain Park boasts 25 miles of trails. Tent Camping is available at Owens Creek. Cabin camping is available at Misty Mount. Rustic chestnut-beam cabins built by the WPA in 1936 offer a charming camping experience. Most cabins sleep 3 or 4. One cabin sleeps 6. Three lodges sleep 8. Cabin 16 sleeps 8 and has a private restroom. Restrooms and hot showers are communal, with one in each of three cabin loops. Adirondack Shelters offers two 3-sided shelters to hike-in campers. Youth Group Camping is available at Poplar Grove.

#### **Cunningham Falls State Park**

14039 Catoctin Hollow Road, Thurmont, MD 21788  
301-271-7574 | <http://www.dnr.state.md.us/publiclands/western/cunningham.asp>

Cunningham Falls State Park is located in the picturesque Catoctin Mountains. It is divided into two separate but unique areas. The William Houck Area located three miles west of Thurmont on Route 77 has the lake area, falls and camping area. The Manor Area off Route 15 three miles south of Thurmont has the Scales and Tales Aviary, camping and the historic Catoctin Iron Furnace. Outdoor activity is everywhere at Cunningham Falls State Park. Leisure opportunities like swimming, hiking, fishing and canoeing are available. For those who wish to get away for either a night or longer there are campsites and camper cabins available for rental from April through October.

### **Deep Creek Lake State Park**

898 State Park Road, Swanton, Maryland 21561

301-387-5563 | <http://www.dnr.state.md.us/publiclands/western/deepcreek.asp>

Most of the parks visitor services are located on State Park Road along the waterfront of Deep Creek Lake. The park includes approximately 1 mile of shoreline on this, Maryland's largest man-made lake. Access is available for fishing, swimming, and boat launching. Several picnic areas offer excellent views of the lake with easy access to the beach and other facilities.

### **YMCA Camp Letts**

P.O. Box 208, 4003 Camp Letts Road, Edgewater, MD 21037

410-919-1410 | <http://campletts.org/>

Camp Letts, located on a beautiful inlet off the sparkling Chesapeake Bay, overlooks three islands and a 2,600-acre preserve that has served as the backdrop for 100 summers of land-based and aquatic adventures.

### **Maple Tree Campground**

20716 Townsend Road, Rohrersville, Maryland 21779

301-432-5585 | <http://www.thetreehousecamp.com/>

Twenty acres of beautiful woodland, backed up to the Appalachian Trail on South Mountain provide an ideal setting for year-round camping and hiking. Maple Tree Campground is located near Harpers Ferry, West Virginia and is close to Washington, D.C. and Baltimore, Maryland. The unique lodging includes Tree Cottages, Tree Houses and Tent Sites equipped with fire circles, picnic tables and charcoal grills. Camp facilities offer newly remodeled bathrooms, private outdoor showers, garbage disposal, pavilion and a camp shop stocking firewood, charcoal, ice, frozen steaks, salmon steaks, chicken and other foods and items you may have forgotten to pack.

### **Rocky Gap State Park**

12500 Pleasant Valley Road, Flintstone MD 21530

301-722-1480 | <http://www.dnr.state.md.us/publiclands/western/rockygap.asp>

Rocky Gap State Park is located in Western Maryland's Allegany County. The park encompasses over 3,000 acres of public land for visitors to enjoy. Rugged mountains surround the park, featuring 243-acre Lake Habetz. The lake is fed by Rocky Gap Run, which winds its way through an impressive mile-long gorge, displaying sheer cliffs, overlooks and a hemlock forest dense with rhododendron and mountain laurel. Overlooking the lake is Evitt's Mountain, named for one of the first European settlers in Allegany County.



### **Swallow Falls State Park**

c/o Herrington Manor State Park

222 Herrington Lane, Oakland, MD 21550

301-387-6938 | <http://www.dnr.state.md.us/publiclands/western/swallowfalls.asp>

This mountain park is located nine miles north of Oakland, Maryland and contains some of Maryland's most breathtaking scenery. The Youghiogheny River flows along the park's borders, passing through shaded rocky gorges and creating rippling rapids. Muddy Creek Falls is a crashing 53-foot waterfall – a spectacular sight. Tall hemlocks dominate the silent woods. The meandering trails through Swallow Falls guide hikers to some of the most breath-taking scenery in Western Maryland.

## **Pennsylvania**

---

### **Pennsylvania Department of Conservation and Natural Resources**

<http://www.dcnr.state.pa.us/stateparks/recreation/hiking/where/south/index.htm>

Provides a list of various hiking trails and state parks located in the Southern region of Pennsylvania.

### **Knoebel's**

391 Knoebels Boulevard, Elysburg, PA 17824 | 800-487- 4386 | <http://www.knoebels.com/>

Knoebel's is a free amusement park with rides, a water park, and other attractions that you pay as you go. Campsites and cabins available for rent.

## **Virginia**

---

### **Camp Friendship**

573 Friendship Way, Palmyra, VA 22963

800-873-3223 | <http://campfriendship.com/>

Camp Friendship's Family Camp provides an opportunity for a low-cost family vacation in a safe, comfortable setting with the recreational activities to interest all ages.

### **Hungry Mother State Park**

2854 Park Boulevard, Marion, VA 24354-9323

276-781-7400 | [http://www.dcr.virginia.gov/state\\_parks/hun.shtml](http://www.dcr.virginia.gov/state_parks/hun.shtml)

Hungry Mother State Park in southwestern Virginia is noted for its woodlands and lake. Easily accessible from Interstate 81, this park has folklore and history, swimming, camping, cabin rentals, boat rentals, hiking and the park system's first conference center, Hemlock Haven.

### **Shenandoah National Park**

Stanley, VA 22851 | 540-999-3500 | <http://www.nps.gov/shen/index.htm>

Shenandoah National Park is a long meandering park in the Blue Ridge Mountains located in the state of Virginia. The western border of the park is the Shenandoah River & river valley and the eastern border runs along the rolling hills of the Virginia Piedmont. Much of the park consists of the Blue Ridge Mountains which contain the highest mountains in eastern North America.

## **West Virginia**

---

### **North Bend State Park**

202 North Bend Park Road, Cairo, WV 26337  
304-643-2931 | <http://www.northbendsp.com/>

North Bend State Park, in West Virginia, is named for the horseshoe curve of the North Fork of the Hughes River. The park offers a multitude of recreational facilities in a beautiful pastoral setting. The fishing streams, lake, hiking trails, abundant wildlife and excellent overnight accommodations, lodge and cabins, and lodge dining room are some of the features of this year-round park. North Bend also features the 72 mile North Bend Rail Trail, which is designed for hiking, mountain biking and horseback riding. The rail trail runs along the old B & O Railroad bed from Parkersburg, WV to Wolf Summit, near Clarksburg, WV. North Bend has a 305-acre recreational lake. A boat ramp, handicapped accessible fishing pier, and other fishing access points. Visit our web pages for more information about lodging, activities and events, and recreation at North Bend State Park.

### **Blackwater Falls State Park**

Davis, WV 26260 | <http://www.blackwaterfalls.com/>

Blackwater Falls State Park is named for the falls of the Blackwater River whose amber-colored waters plunge five stories then twist and tumble through an eight-mile long gorge. Blackwater lodge, cabins and restaurant are open year-round and welcome visitors to enjoy winter sled riding, spring greening, cool summer evenings, and autumn foliage.

### **Pipestem Resort State Park**

405 Pipestem Drive, Pipestem WV, 25979  
304-466-1800 | <http://www.pipestemresort.com/>

Escape to the mountains at Pipestem Resort Park, the "Year-round Crown Jewel of West Virginia State Parks." From beautiful scenic overlooks of the Bluestone Gorge to the two lodges, vacation rental cottages, campgrounds, golf courses, restaurants, modern conference facilities, and much more, Pipestem Resort State Park has something for everyone.

## Seneca Rocks

[http://www.stateparks.com/spruce\\_knob-seneca\\_rocks\\_national\\_recreation\\_area\\_in\\_west\\_virginia.html?](http://www.stateparks.com/spruce_knob-seneca_rocks_national_recreation_area_in_west_virginia.html?)

Seneca Rocks is an unincorporated community located in Pendleton County, West Virginia, USA.[1] The community of Seneca Rocks — formerly known as Mouth of Seneca — lies along West Virginia Route 28/West Virginia Route 55 near the confluence of Seneca Creek and the North Fork South Branch Potomac River. The community also lies near Seneca Rocks, the crag from which it takes its name. Both lie within the Spruce Knob-Seneca Rocks National Recreation Area of the Monongahela National Forest.



## WEBSITES, PUBLICATIONS, BLOGS & OTHER RESOURCES

### **BALTIMORE BLOGS**

**Baltimore Mommies** | <http://www.baltimoremommies.com/>

As part of The Mommies Network, BaltimoreMommies.com is a free community for moms in Baltimore, Howard, Eastern Carroll and northern Anne Arundel Counties, Maryland. We realize that all moms need local support -- and who can't use another friend? BaltimoreMommies.com offers a simple way to connect with local moms for friendship, support and fun. Members meet on our private discussion forums to share information on everything from where to get the best haircut to tips on transitioning to a "big kid" bed. Each month, we also offer many face-to-face events for our members, their children and their families. Register today to access our discussion forums, events calendar and more! It's free and we'll keep your info secure and private.

**The Village Parents** | <http://villageparents.wordpress.com/>

Stay in the loop with family-oriented activities and news in and around Charles Village.

**Kid Baltimore** | <http://www.kidbaltimore.com/>

Baltimore parents who own a design & illustration company share their thoughts and suggestions on local places fit for the entire family.

**Downtown Baltimore Family Alliance** | <http://dbfamblog.org/>

The Downtown Baltimore Family Alliance uses multiple contributors to add to a blog that promotes vibrant communities and the families who live in them.

**Forge Flyer** | <http://www.forgeflyer.com/>

Links to fun places to go, classes for both children and adults, events in the Baltimore area and community issues.

## PARENTING/FAMILY BLOGS

**Soule Mama** | <http://www.soulemama.com/>

A website featuring the daily encounters of the Soule family—a nurturing family of seven living on a rural farm in Maine and the many exciting creative projects, life lessons, and laughter they share.

**Tinkerlab** | <http://tinkerlab.com/>

TinkerLab aims to help parents tap into a child’s natural curiosities through creative experiments that support independent thinking, enthusiasm for the wonders of the world, problem posing and solving, and the imagination. The projects and ideas shared here are child-centered and value the processes of exploration, experimentation, and curiosity.

**Laugh, Make, Nurture, Organise, Play (LMNOP)** | <http://www.lmnop.com.au/>

Interactive website of stylish children’s magazine that promotes laughing, making nurturing, organizing, and playing.

**Design Mom** | <http://www.designmom.com/>

Graphic designer and art director mother of six shares how she has combined all of these things, living at the intersection of design and motherhood.

**Modern Parents Messy Kids** | <http://www.modernparentsmessykids.com/>

Modern Parents Messy Kids is a lifestyle and design blog cataloging usable information on parenting, child development, enriching play activities, arts and crafts, new products, and kid-friendly design.

**Progressive Pioneer** | <http://www.progressivepioneer.com/>

A mother living the progressive movement and sharing her discoveries on craft-making, cooking, gardening and parenting along the way.

**Childhood 101** | <http://childhood101.com/>

Childhood 101 celebrates the joys of family and childhood, providing information and inspiration for modern day parents as their children play, learn and grow.

**Frugal Family Fun Blog** | <http://frugalfamilyfunspot.blogspot.com/>

This blog has many activities that will help you to nurture your child's creativity without breaking your family's budget, since many activities featured here are either very low-cost or absolutely free.

**The Artful Parent** | <http://www.artfulparent.com/>

This blog is devoted to creativity and art projects with kids.

## ADDITIONAL RESOURCES

**Baltimore's Child Magazine** | <http://www.baltimoreschild.com/home/index.cfm>

They have a wealth of directories of children's programs, schools, dance, art and music programs, daycare services, etc.

**Maryland Family Magazine** | <https://www.facebook.com/marylandfamily>

Offers a wealth of resources regarding events in the area, schools, preschools, camp guides, and parents guides.

**Baltimore Office of Promotion and Arts** | <http://www.bop.org/>

BOPA coordinates Baltimore's major events including New Year's Eve and July 4th celebrations at the Inner Harbor, which routinely attract hundreds of thousands of spectators; Artscape, which serves more than 350,000 people each year; Baltimore Book Festival, Baltimore Farmers' Market & Bazaar, and the Dr. Martin Luther King, Jr. and Preakness parades. Check the website for up-to-date listings of events.

**Creative Alliance** | <http://www.creativealliance.org/>

The Creative Alliance builds communities by bringing together artists and audiences from diverse backgrounds to experience spectacular arts programs and engage in the creative process. We provide support to area artists, promote Baltimore as a center for creative production, act as a positive force in our community, and advocate for cultural expression rooted in a sense of place. Check the website for up-to-date listings of events and workshops.

**Maryland Committee for Children** | <http://www.mdchildcare.org/mdcfc/mcc.html>

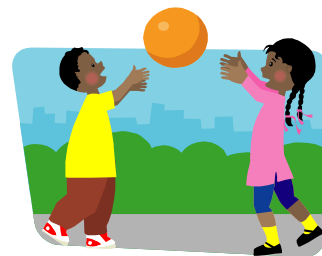
Maryland Committee for Children, Inc. (MCC) is an advocate and catalyst for the development of a strong system of quality child care, early education, and family support. Working with interested parties on local, state, and national levels, MCC is a private, non-profit organization that has a rich history of action in matters affecting children, families, and the child care community of this state. The website also provides information on child development and safe websites for children.

**Zero to Three** | <http://www.zerotothree.org/>

ZERO TO THREE is a national, nonprofit organization that informs, trains, and supports professionals, policymakers, and parents in their efforts to improve the lives of infants and toddlers. Find many answers and resources on the website.

**Kids Love Downtown Baltimore** | <http://www.kidslovedowntownbaltimore.com/>

Need to find something fun to do with your kids during the cold winter months? Check out all the fun events and activities happening in downtown Baltimore.



## CO-OP MEMBER SURVEY RESULTS

---

### Q: What is your family's favorite...?

#### Playground

- Roger's Forge Tot Lot
- Linkwood (Stony Run Park Playground)
- 34th St. & Beech in Wyman Park
- YMCA at Stadium Place
- 41st St. & TV Hill
- Towson, across from the library
- The Gilman school (after hours)
- Corner of Lake Ave & Norman Ave (Mayfield neighborhood)

#### Park

- Sherwood Gardens
- Cylburn Arboretum
- Patterson Park
- Wyman Park
- Druid Hill Park
- Double Rock Park
- Abell Open Space (32nd St. & Abell Ave.)

#### Museum

- Aquarium
- Fire Museum in Lutherville
- Walters & BMA (FREE!)
- MD Science Center
- Port Discovery
- B&O Train Museum (Thomas the Train visits the first two weekends in May)
- The Maryland Zoo



### Free Activity

- Mother Goose on the Loose/Toddler Jumps programs at any branch of the Pratt Library
- Storytime at the JHU B&N bookstore (Tues & Sat at 10)
- Storyville (Balt Co. Public Library: Woodlawn & Rosedale Branches)
- Visitor's Center Fountain at the Inner Harbor
- Free Fall events in October ([www.freefallbaltimore.com](http://www.freefallbaltimore.com))
- Red Canoe Sing-a-long (Harford Rd.)
- Pete Rawlings Conservatory in Druid Hill Park
- Creative Alliance Saturday drop in art program
- Walters/BMA

### Group Class

- Hoppin' Tots
- Sokol gymnastics
- Miss Alina's sing-a-long (2640 St. Paul St., Mon 10-12)
- My Gym
- Yoga at Evolvewell studio (Roland Park)
- Music Together (has several local branches, good one at MD state Boys Choir bldg.)

### Rainy day Activity

- Towson library
- Storyville
- Small land at IKEA
- Walters Art Museum (Drop-in art studio Sat & Sun 10-3)
- Baking or arts & crafts at home/with friends
- Chuck E. Cheese

### Swim

- Meadowbrook
- Roosevelt Park at the Hampden Pool
- Patterson Park pool
- YMCA (33rd St.)
- Cold Spring Swim & Tennis

### Child-friendly Restaurants

- Iggy's
- Golden West
- Paper Moon
- Ledo Pizza
- The Dizz at the Grandview
- Café Hon
- Bertucci's
- Tamber's
- Clementine
- The Bowman
- IHOP
- Red Robin
- Red Canoe
- Belvedere Market
- Alonso's/S'ghetti Eddies/Loco Hombre/Evergreen (Cold Spring Lane in Roland Park)

### Day Trip

- D.C. (free street parking on Sun mornings)
- The Insect Zoo at the Natural History Museum in D.C.
- Larriland Farm (pick your own fruits & veggies)
- Philadelphia, PA
- Lancaster, PA
- Frederick, MD
- Knoebels Amusement
- Assateague, VA

### Local Event

- DBFA Egghunt in Patterson Park (FREE! 4/16/11)
- DBFA Harbor Harvest Festival (October)
- Summer concert series in Patterson Park
- Any Milkshake concert

### Children's Clothes

- Soft & Cozy Baby
- Urban Baby Runway
- Jack & Immy's consignment (Fell's Point)
- Kid to Kid consignment (Cockeysville)
- Lily Pad consignment (Towson)
- Tea Collection
- Ladybugs & Fireflies

### Best-kept Secret

- Charm City Circulator
- Lunch with the elephants (in April when Ringling Bros comes to town)
- Sherwood Gardens
- Third Friday of the month is Target Family Fun Night at Port Discovery (\$2/person from 4-7pm), [www.wvmgrs.com/traingardens.htm](http://www.wvmgrs.com/traingardens.htm) (Grandpa's Holiday Train Garden Page for 2010) gives you a list of tons of local holiday displays of trains in the area
- Cindy Anderson (Mondays and Wednesdays with Zach)

### Toy Stores

- Shenanigans (Roland Park)
- BMA gift shop
- Craftsman Supplies on North Ave.
- Amuse (Fell's Point & Shops at Quarry Lake)
- Toys R Us (Towson)

### Bookstores

- Book Thing
- Children's Bookstore (Roland Park)
- Normal's
- JHU B&N
- Daedalus
- Ukazoo

## CALENDAR OF EVENTS

---

### JANUARY

#### **New Year at Noon**

Maryland Science Center, 601 Light St., Baltimore, MD 21230

Does the Ball Drop before your Bedtime? Not this year! Join the Maryland Science Center in its annual New Year's Eve celebration at Noon for Midnight Noon

### MARCH

#### **Hopkins Symphony Orchestra FREE annual children's concert**

Johns Hopkins University | Shriver Hall at Homewood Campus | <http://www.jhu.edu/~jhso/>

Usually held on a Saturday, from 1–2 p.m. in early March. Jed Gaylin, music director of the HSO, introduces kids to the orchestra and performs a short program of music. Children are invited up to the stage after the concert to see the instruments up close.

#### **St Patrick's Day Parade**

Held the second weekend of March each year. This free annual parade begins at the Washington Monument and continues to Pratt Street and Market Place. An impressive group of bagpipers are among the highlights every year.

### APRIL

#### **Tulips Blooming at Sherwood Gardens**

4100 Greenway St., Baltimore, MD 21212 | <http://www.guilfordassociation.org/sherwood/>

This privately owned park has 80,000 tulips that burst into bloom in late April/early May. A perfect spot for children to enjoy the spring season.

#### **Ladew Topiary Gardens**

3535 Jarrettsville Pike, Monkton, MD 21111 | 410-557-9466 | <http://www.ladewgardens.com/>

The Gardens are open Mid-April to the end of October, Mondays-Fridays 10am-4pm; Saturday and Sunday 10:30am-5pm \$8 adults, \$2 children (additional admission to get into the historic house on the grounds) Variety of gardens and shrubs carved into animals and shapes. 1.5 mile nature walk on the grounds. Concerts on summer weekends. Café on the premises but also an ideal place to bring a picnic.

## MAY

### **Baltimore Farmers' Markets**

Downtown Location: open May 1-mid December on Sundays starting at 8 am. Located at Holliday and Saratoga Streets under the Jones Falls Expressway.

Waverly Location: open year-round on Saturdays starting at 7 am. Located at 32nd and Barclay Streets.

### **Belvedere Square Summer Sounds Concerts**

York Road and Belvedere Avenue, Baltimore, MD 21212

410-464-9773 | <http://www.belvederesquare.com/index.cfm>

Free, weekly outdoor concert series featuring live music by Baltimore's favorite bands. Plus, concert-goers can enjoy gourmet food and beverages. Concerts are every Friday evening, May– September, 6-9 p.m.,

## JUNE

### **Toddler Fair**

The Montessori School, 10807 Tony Drive, Lutherville, MD 21093

Typically held the last weekend of June. Toddlers will have the chance to ride ponies and see an amazing reptile display. A real fire truck, balloon sculpture, gymnastics demonstrations, interactive music programs and puppet shows are scheduled throughout the day. Parents will also have the opportunity to learn about goods and services that are offered for families with toddlers in the Baltimore area. Exhibitors include those who provide educational toys, children's recreational activities, preschools and day care facilities, handcrafted products for toddlers and services for families with young children. The event is free of charge and is open to the public.

### **Pirate Story Time**

912 S. Ann St., Baltimore, MD 21231 (Fells Point)

410-327-8378 | <http://urbanpirates.com/web/>

Join buccaneers of all ages for FREE story time every Wednesday and Friday morning thru Labor Day, then Fridays. Fun, music, stories, and more aboard The Fearless, which remains docked at Ann St. Pier, perfect for even the youngest pirates! Ages: Infant- 10

## HonFest

Hampden Neighborhood, Baltimore, MD

Held second weekend of June each year; Baltimore kitch at its finest, Honfest is a celebration of all things Bawlmer - especially big hair. Since its beginning in 1994, this festival has exploded in popularity, and now includes the Miss Hon contest, along with the requisite food, drink, and live music. W. 36th St. in Hampden is the epicenter of all things Hon.

## JULY

### July 4th Fireworks Displays

- Inner Harbor/ Fell's Point
- Towson Marketplace
- Oregon Ridge State Park

### July 4th Celebration at Ft McHenry, Baltimore MD

Fort McHenry, 2400 E Fort Ave., Baltimore, MD 21230

410-962-4290 | <http://www.nps.gov/fomc/index.htm>

Family friendly fourth of July festival including period demonstrations and reenactments.

### Baltimore Symphony Orchestra Summer Concert Series

Oregon Ridge Park; 13401 Beaver Dam Rd, Cockeysville, MD 21030

410-887-1818 | <http://www.bsomusic.org/>

Symphony concerts weekends in July in the outdoor concert hall. Fantastic fireworks display concludes every performance. Pack a picnic, sit outside and enjoy the music.

## Artscape

Artscape touts itself as "America's largest free public arts festival" on the second weekend of July every year. The weekend brings nationally-known bands, the best food vendors from throughout the city and a collection of artists and art that is second to none. Admission is free. The fun begins at noon each day. The Patricia and Arthur Modell Performing Arts Center at The Lyric sits at the center of the festival at 140 West Mt. Royal Avenue, 21201.

## AUGUST

### **Maryland State Fair**

Maryland State Fairgrounds  
2200 York Road, Lutherville-Timonium, MD 21093  
410-252-0200 | <http://www.marylandstatefair.com/>

### **Maryland Renaissance Festival**

1821 Crownsville Road, Annapolis, MD 21401  
800-296-7304 | <http://www.rennfest.com/>

Festival usually held from late August to Mid-October. Check website for current information. Tickets are required for admittance.

## SEPTEMBER

### **Live Jazz in the Garden Rawlings Conservatory**

Druid Hill Park, 3100 Swann Dr., Baltimore, MD 21217  
410-396-0008, <http://www.rawlingsconservatory.org/>

Concert held in Druid Hill Park during select weekend nights in September.

### **Baltimore Book Festival**

Mt. Vernon Place, centered on 600 North Charles St., Baltimore MD 21201  
410-752-8632 | <http://www.baltimorebookfestival.com/>

The Baltimore Book Festival features hundreds of appearances by local, celebrity and nationally known authors, book signings, more than 100 exhibitors and booksellers, nonstop readings on multiple stages, cooking demos by top chefs, poetry readings, workshops, panel discussions, walking tours, storytellers and hands-on projects for kids, live music, and a delicious variety of food, beer and wine.

## OCTOBER

### **Free Fall Baltimore**

<http://www.freefallbaltimore.org/index.cfm>

A promotion which runs the entire month of October. Sixty-nine local cultural organizations offer free admission to museums, puppet shows, art exhibitions, plays, walking tours, musical performances, festivals, dance workshops and more.

### **The Orthodox Church of St. Matthew's Multi-Cultural Festival**

7271 Eden Brook Dr., Columbia, MD 21046

410-381-2284 | <http://stmatthewfestival.org/>

Handmade international foods, free live entertainment, hand-made crafts, a silent auction, and an amazing themed children's area with games and prizes. Held early October. Please call or check website for more information.

### **PumpkinFest at Irvine Nature Center**

11201 Garrison Forest Rd., Owings Mills, MD 21117

443-738-9200 | <http://www.explorenature.org/experience-irvine/pumpkinfest>

PumpkinFest is a fun event for families and communities to celebrate the delights of autumn. Each October, hundreds of families gather at Irvine to enjoy a wholesome day of music, food and fun. There is an admission fee for children over age 2. Please call or check website for more information.

### **Fall Harvest Festival at Cromwell Valley Park**

Willow Grove Farm, 2175 Cromwell Bridge Rd., Parkville, MD 21234

410-887-2503/2504 | <http://www.cromwellvalleypark.org/>

Come join us for family fun "Down on the Farm"! Apple Butter demonstrations, pumpkin and mum sales, children and family games, music, food, and lots of fun for the whole family.

### **Weber's Farm Fall Festival**

2526 Proctor Ln., Baltimore, MD

410-668-4488 | <http://www.weberscidermillfarm.com/>

Apple picking, hayrides, farm animals, scarecrow making and hay maze are all some of the fall activities offered at the farm. Produce, jams and jellies, baked goods and crafts for sale throughout the season, and of course, a large selection of pumpkins for Halloween.

### **Great Lantern Parade at Patterson Park**

27 South Patterson Park Avenue, Baltimore, MD 21231

410-276-3676 | <http://www.creativealliance.org/>

A one-of-a-kind event happens right here in Patterson Park every October. It's the coolest community Parade you'll ever see! Directed by Artist Laure Drogoul, produced by Creative Alliance, Friends of Patterson Park & SouthEast CDC.



## **ZooBOOO!**

The Maryland Zoo at Baltimore | 410-396-7102 | <http://www.marylandzoo.org/>

ZooBOOO! features trick-or-treating, a costume contest, games, crafts, pumpkin painting, and of course, all the zoo's regular attractions. Held in the Waterfowl Lake Pavilion, regular admission prices apply.

## **DECEMBER**

### **Holiday Train Display at B & O Railroad Museum**

901 West Pratt Street; Baltimore, MD 21223

410-752-2490 | <http://www.borail.org/default.aspx>

Enjoy the museum's annual holiday celebration of toy trains and model railroading typically lasting the whole month of December.

### **Miracle on 34th Street**

700 block of 34th Street between Keswick Road and Chestnut Street, Hampden

<http://christmasstreet.com/index.html>

Community display of holiday lights and animated figures.

### **Santa's House and Display at Inner Harbor**

<http://baltimore.org/about-baltimore/inner-harbor/>

### **Kenilworth Train Gardens at The Shops at Kenilworth**

800 Kenilworth Dr., Towson, MD 21204

410-321-1909 | <http://www.theshopsatkenilworth.com/>

Please call or check website for more information.